

Model

40320 For 3/4" W x 18" L Belts

40326 For 20-1/2" L Belts

40335 For 1/2" W x 18" L Belts

40321 Versatility Kit

40324 Versatility Kit (Metric)

Dynaflex® II
Complete Assembly

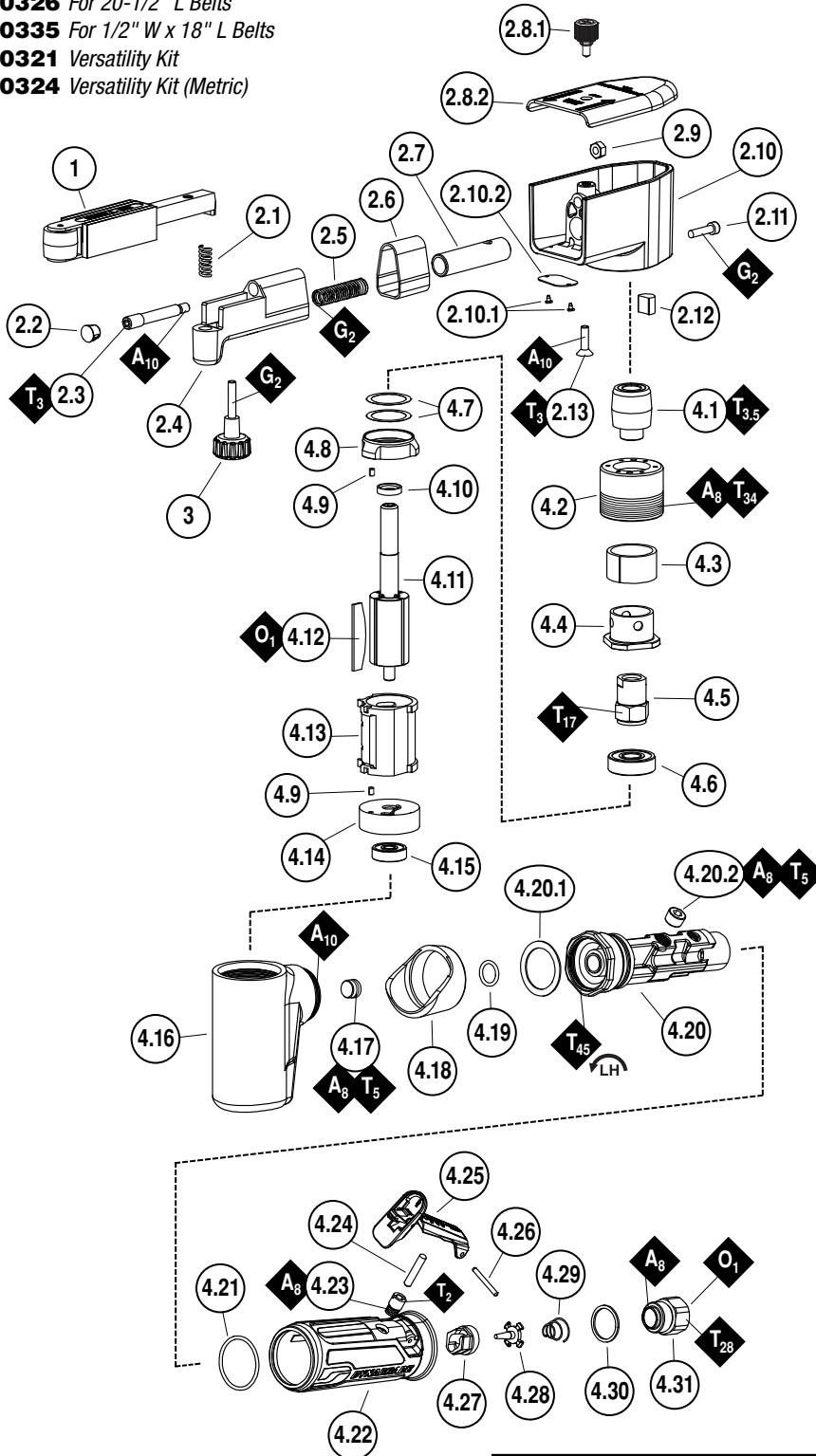


Figure 1 - Versatility Kit (40321)

Part No.	Belt Size	Platen Pad
11206	3/4" W x 18" L	Hard
11203	1/2" W x 18" L	Soft
11204	1/8"-1/2" W x 18" L	—

Kit also includes 50010 Threaded Collet (1/4") to convert tool to Die Grinder.

Figure 2 - Versatility Kit (40324)

Part No.	Belt Size	Platen Pad
11206	3/4" W x 18" L	Hard
11203	1/2" W x 18" L	Soft
11320	1/2" W x 18" L	Hard

Kit also includes 50015 Threaded Collet (6 mm) to convert tool to Die Grinder.

KEY	
O	Oil: O ₁ = Air Lube
G	Grease: G ₂ = Loctite® #771
A	Adhesive: A ₈ = Loctite® #567 A ₁₀ = Loctite® #243
T_x	X = Torque Value (N•m)
T	Torque: N•m x 8.85 = lb•in.
Always follow adhesive manufacturers cleaning and priming recommendations.	

ITEM	P/N	DESCRIPTION	QTY.
1	11206	CONTACT ARM - 40320	AR
	11287	CONTACT ARM - 40326	
	11203	CONTACT ARM - 40335	
	See Fig.1	VERSATILITY KIT - 40321	
	See Fig.2	VERSATILITY KIT - 40324	
2	15355	HOUSING ASBLY - 40320/21/24	1
	15371	HOUSING ASSEMBLY - 40326	
	15370	HOUSING ASSEMBLY - 40335	
2.1	11040	SPRING	1
2.2	96334	PLUG	1
2.3	15308	GUIDE POST	1
2.4	15306	TENSION ARM	1
2.5	95426	SPRING	1
2.6	15309	DUST COVER	1
2.7	15307	TENSION SHAFT	1
2.8	15312	BELT GUARD ASSEMBLY	1
2.8.1	15329	SCREW	1
2.8.2	15310	BELT GUARD	1
2.9	96335	NUT	1
2.10	15354	HOUSING - 40320/21/24	1
	15363	HOUSING - 40335	
	15365	HOUSING - 40326	
2.10.1	95442	SCREW	2
2.10.2	15353	LABEL - 40320/21/24	1
	15361	LABEL - 40335	
	15362	LABEL - 40326	
2.11	95311	SCREW	1
2.12	40029	MOTOR LOCK	1
2.13	95217	SCREW	1
3	95218	KNOB	1
4	05029	MOTOR ASSEMBLY	1
4.1	40375	DRIVE WHEEL	1
4.2	04087	LOCK RING	1
4.3	04078	FELT SILENCER	1
4.4	04084	AIR CONTROL RING	1
4.5	04081	ROTOR NUT	1
4.6	01007	BEARING	1
4.7	01121	SHIM PACK (3/PKG.)	1
4.8	01008	FRONT BEARING PLATE	1
4.9	50767	PIN	2
4.10	01010	SPACER	1
4.11	01120	ROTOR	1
4.12	01011	VANE SET (4/PKG.)	1
4.13	01013	CLYINDER	1
4.14	01014	REAR BEARING PLATE	1
4.15	01015	BEARING	1
4.16	01447	HOUSING	1
4.17	01437	PLUG	1
4.18	01558	COLLAR	1
4.19	95523	O-RING	1
4.20	45309	THROTTLE BODY ASSEMBLY	1
4.20.1	01548	GASKET	1
4.20.2	01437	PLUG	1
4.21	96077	O-RING	1
4.22	09615	SLEEVE	1
4.23	45315	BUSHING	1
4.24	97045	PIN	1
4.25	45263	THROTTLE LEVER ASSEMBLY	1
4.26	97060	PIN	1
4.27	45310	SEAL	1
4.28	58365	TIP VALVE	1
4.29	01468	SPRING	1
4.30	01564	SPACER	1
4.31	01494	INLET BUSHING	1

AR - "As Required"